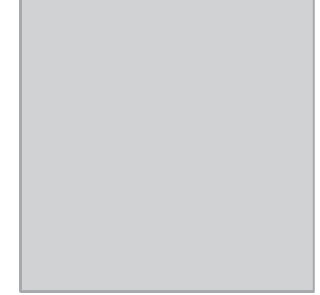
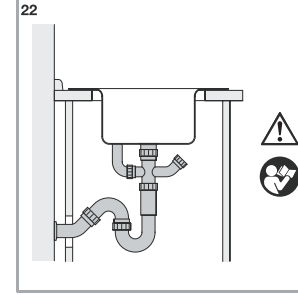
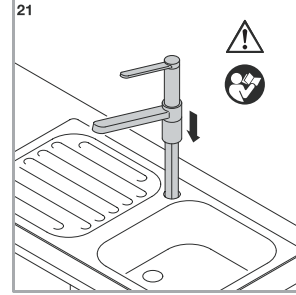
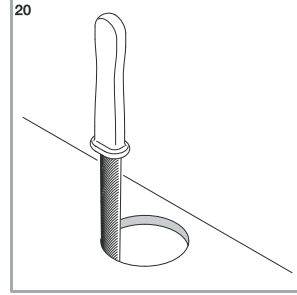
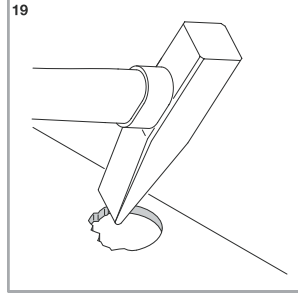
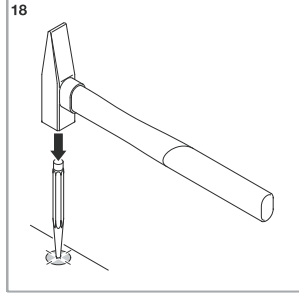
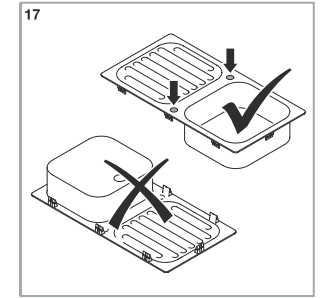
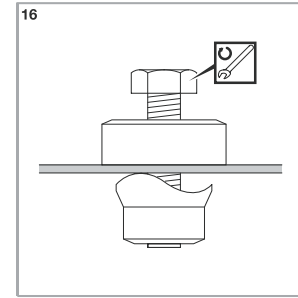
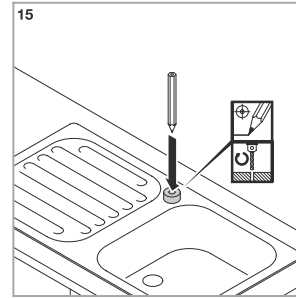
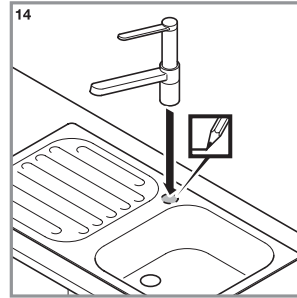
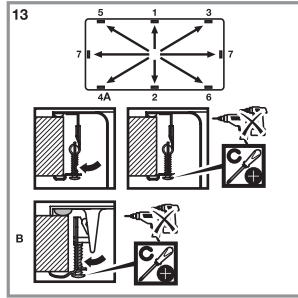
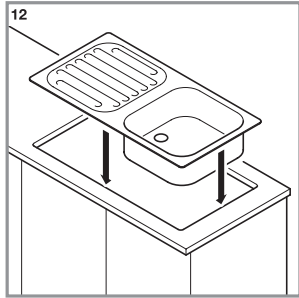
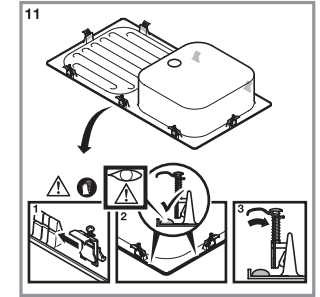
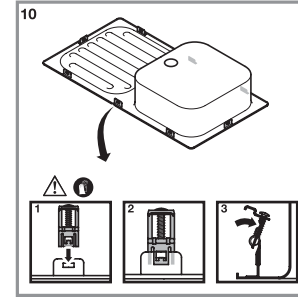
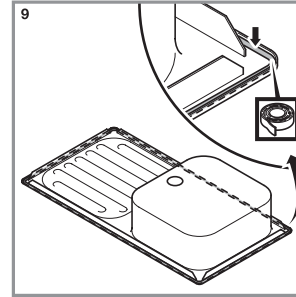
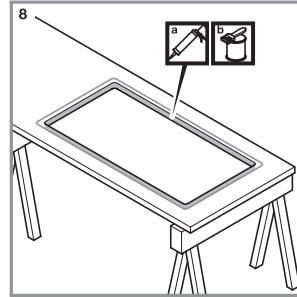
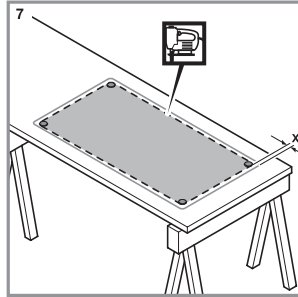
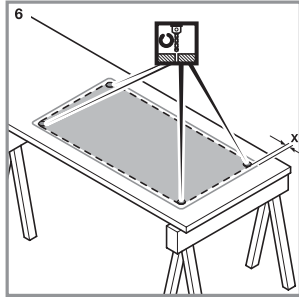
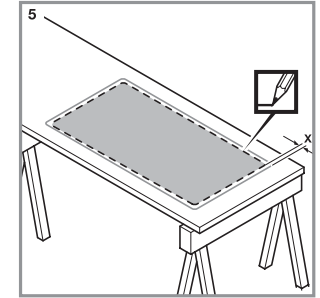
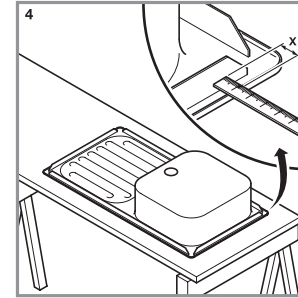
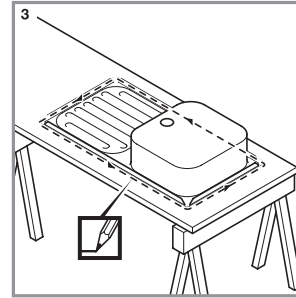
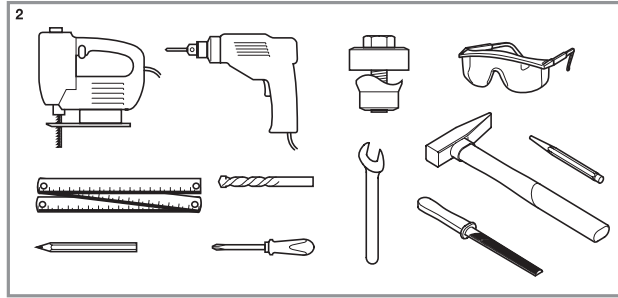
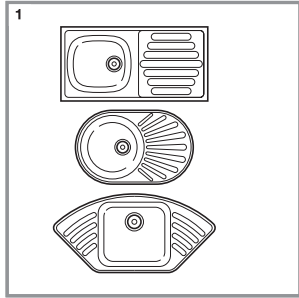


# VOGEL

Quartz Sink



## Operating instructions

### Built-in kitchen sink

#### Safety instructions

- For safe handling of the product, the user must have read and understood the operating instructions before first use.
- Observe all safety instructions! If you do not observe the safety instructions you will endanger yourself and others.
- Keep all instructions for use and safety instructions for future reference.
- If you sell the product or pass it on to someone else, be sure to also include these instructions for use.
- The product may be used only when in a faultless condition. If the product or part of the product is defective, have it repaired by a qualified person.
- Work with caution and only if you are physically fit: Working under the effects of fatigue, illness, alcohol, medication and drugs is irresponsible, as you are no longer able to safely use the product.
- Make sure that children do not use the product as toy.
- Always heed the applicable national and international safety, health and labour regulations.
- These instructions for use are intended for the installer and/or instructed and technically skilled end consumer. Please pass these instructions for use on to the end consumer/user after successful installation.
- All parts of the product must be correctly installed.
- All maintenance work must be carried out by an expert.

#### Fitting

**Note:**  
► Fig. 1  
The figures show examples. The appearance and scope of supply of the sinks can deviate from what is shown here.

**Note:**  
The following instructions are valid for all models.

**Note:**  
Please observe the separate installation instructions when mounting taps and drains.

#### Material required

- Fig. 2
- Sealant (e.g. silicone)
- Jig saw
- Saw blade suitable for the worktop
- File
- Screwdriver
- Protective gloves

#### Sinks made of stainless steel

- Punching press
- Spanner

#### Sinks made of composite materials

- Hammer
- Punch
- Safety goggles

#### Installing the sink

- Fig. 3–5
- Place the worktop onto sawhorses.
- Place the sink upside down on to the underside of the worktop.
- Pay attention to the correct alignment of the sink.
- Trace round the edge of the sink with a pencil.
- Set the sink aside.
- Measure the edge of the underside of the sink (dimension X).
- Trace round the cutting edge inside the drawn contour of the worktop (with an inward offset of dimension X).

► Fig. 6–7

**NOTICE!**  
**Risk of breakage of the worktop!**  
If a narrow section of the worktop remains on the front or rear after sawing, the worktop may very easily break at this point.

- Drill a sufficiently large hole for the jig saw blade at all corners of the cutting line.
- Saw the cutout for the sink along the inner cutting edge.

► Fig. 8–9

- Smooth off the cutting edges with a file, if required.
- Apply silicone or a suitable sealant to the cutting surfaces.
- Stick the sealing tape to the underside of the sink.

► Fig. 10–11

- Attach the clips to the sink as illustrated. Observe different models and materials:
  - Stainless steel sinks: Push the clips onto the lugs on the underside of the sink and allow them to engage.
  - Plastic sinks: Push the clips into the grooves on the underside of the sink.
- Fold the hooks of the clips inwards.

► Fig. 12–13

- Turn the worktop over.
- Insert the sink into the cutout in the worktop.
- Fold the hooks of the clips outwards.

**NOTICE!**  
**Risk of damage to the material!**  
Only use hand-held screwdrivers; not cordless screwdrivers.  
Please observe the illustrated order when tightening the screws.

- Tighten the clips in the order illustrated with a screwdriver until the edge of the sink is tightly positioned.

#### Push the hole for the taps

##### Sinks made of stainless steel

► Fig. 14–16

**Note:**  
You will find the correct punching press for your tap in your **VOGEL** store.  
Punching press Ø 32 mm: LUX item number: 541426  
Punching press Ø 34 mm: LUX item number: 541427

- Place the tap in the desired position and trace round the contour with a pencil.
- Mark the centre point of the drill hole with the upper part of the punching press.
- Pre-drill a hole with a 3 mm metal bore, and then drill a hole using a metal bore whose diameter corresponds with the punching press screw connection.
- Position the punching press and screw on the counter-piece from below.
- Turn the screw of the punching press with the wrench until the hole is punched.
- Remove the punching press upwards out of the sink.

##### Sinks made of composite materials

► Fig. 17–20

**Note:**  
The holes for fittings are pre-punched at the possible positions at the factory and marked at the top with stickers.

**NOTICE!**  
**Danger from product damage!**  
Always hit from the top, never from the bottom.

- Using the hammer and punch, hit the pre-punched hole in the middle of the sticker.
- Using the peen of the hammer, remove the protruding material **carefully and without force**.
- Deburr the edges of the hole with a half-round body file.

#### Install the taps and the drain.

► Fig. 21–22

**NOTICE!**  
**Risk of water damage!**  
Installation must be carried out by an installer and/or an instructed, technically skilled end consumer!

- Install and connect the taps according to the manufacturer's installation instructions.
- Install the overflow and drain set in accordance with the manufacturer's installation instructions.

#### Cleaning and care

**NOTICE!**  
**Danger from product damage!**  
Do not use metal cleaning equipment. Do not use aggressive cleaning agents or solvents. Do not set down any hot objects such as saucepans and frying pans on coated sinks.

- Regularly check plug-in and screw-in connections and tighten if necessary.
- When using cleaning and care products, please observe the manufacturer's instructions.

#### Metal care

- Wipe down with soapy water. Remove stubborn stains with dirt and grease solvents.
- Stainless steel surfaces should be regularly cleaned with a conventional stainless steel care product to avoid the formation of a rust film.

#### Plastic care

- Wipe down with soapy water. Remove stubborn stains with dirt and grease solvents.
- Do not use cleaning agents containing solvents; these may damage the surface.
- Protect against direct sunlight to avoid colour changes.

#### Disposing of packaging

- The packaging consists of cardboard and correspondingly marked plastics, which can be recycled.
- Take these materials to a recycling facility.

